

## HARBORSIDE SERIES ECHO BAY

LIVING ROOM VIEWS, MAIN-LEVEL MASTER SUITE,  
AND GREAT IDEAS FOR TWO SECOND-FLOOR BEDROOMS

SAN JUAN  
PASSAGE  
ASSOCIATES, LLC



3 Bedroom, 3.5 Baths

2,677 sq. ft.

Harborside Series Echo Bay Series | Lot 23 | Priced at \$760,000

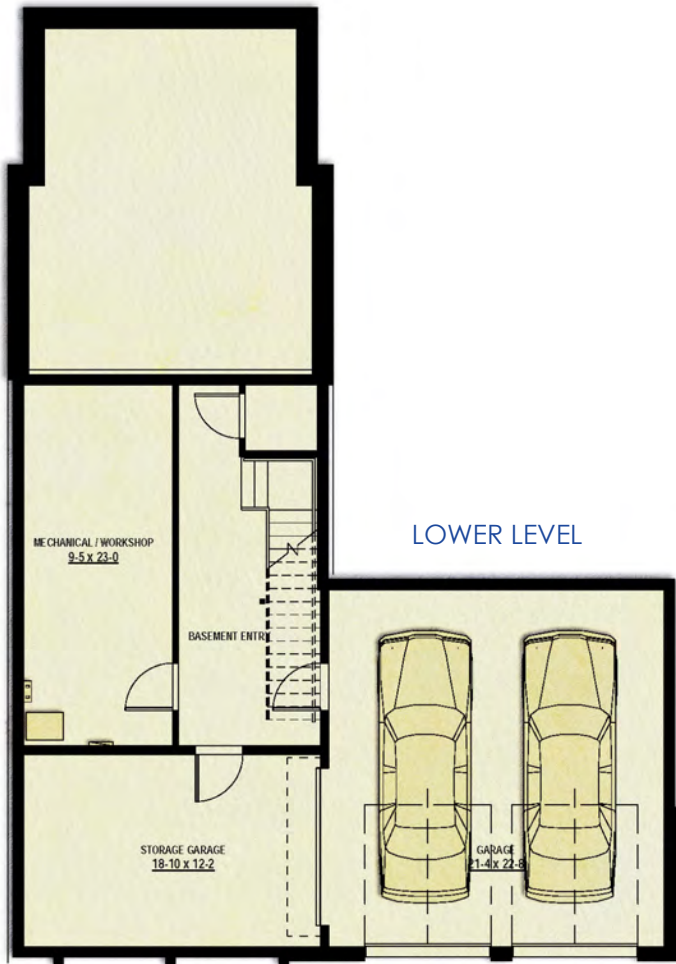
A light-filled living room with cathedral ceiling and a deck with dramatic views toward the water in one direction, French doors to a courtyard in the other — and they're only the start of this stand-out home design. Open kitchen-dining plan for entertaining, a spacious main-floor master suite opening to the patio, and optional elevator access to the garage make for gracious and easy single-floor living. A second floor offers multiple design possibilities, including optional ways to configure two additional bedrooms and a potential extra-large bonus or storage room. High-quality detailing, appliances, and amenities throughout, plus sustainable green building practices for energy efficiency and respect for our natural neighbors.

- Personal Lift
- Welcoming entry foyer with large coat closet
- Light- and view-filled living room with cathedral ceiling, tiled Heatilator gas fireplace, two sets of French doors to view deck and rear courtyard
- Expansive, open kitchen-dining area with nine-foot ceilings, panoramic dining room views
- Gourmet kitchen with granite counters, island with wrap-around dining bar
- Private main-level master suite with dual walk-in closets, sitting area, French doors to courtyard
- Laundry alcove
- Two second-floor guest suites with multiple configuration options, including home office alcove or bonus room
- Three full baths with main floor powder room
- Optional elevator access to high-ceiling, two-car garage on lower level
- Lower level offers space for a storage garage, workshop and bonus expansion area

John L. Scott | REAL ESTATE

*Note: Plans and details subject to modification.*

HARBORSIDE SERIES  
ECHO BAY



John L. Scott | REAL ESTATE

Note: Plans and details subject to modification.

© Copyright 2008 Gilbane Development Company. San Juan Passage is a registered trademark of Gilbane Development Company. Home Designs Copyright 2007, 2008 Donald Powers Architects, Inc.

SAN JUAN  
PASSAGE  
RESIDENTIAL

HARBORSIDE SERIES  
ECHO BAY

SECOND FLOOR OPTION

